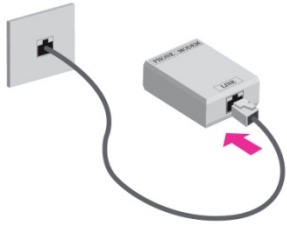


Instalacija D-Link 2641B

Iskopčati dolaznu liniju iz telefonskog aparata. Dolaznu liniju priključiti na **LINE port** (splitter)

1



Telefonskim kablom, povezati telefonski aparat sa **PHONE portom** na splitteru

2



Telefonskim kablom povezati **Modem** port na splitteru sa routerom

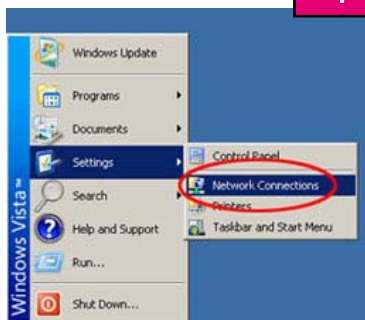
3



Podešavanje mrežne kartice na PC opremi

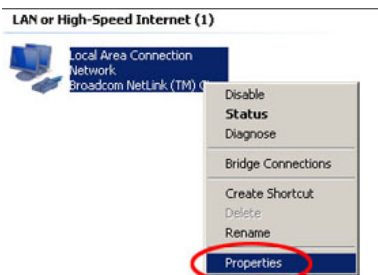
Otvorite prozor Network Connections **Start** dugme > **Settings** > **Network Connections**

4



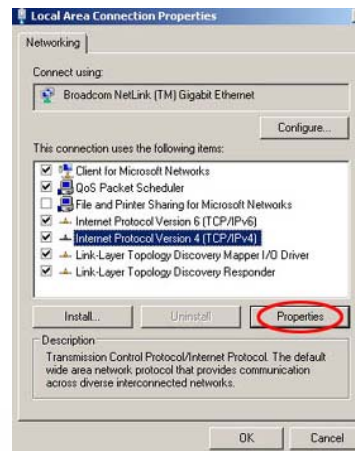
Desnim klikom izaberite opciju **Properties** na ikoni LAN or High-Speed Internet

5



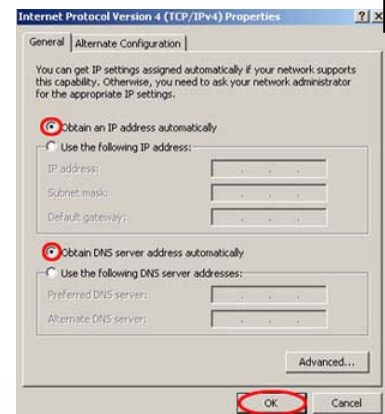
Izaberite opciju **Internet Protocol version 4 (TCP/IPv4)** i kliknite na **Properties**

6



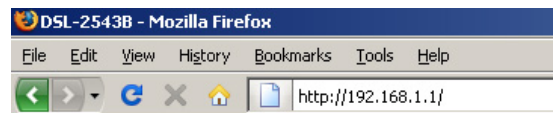
Ukoliko nije selektovano, uključite **Obtain an IP address automatically** i **Obtain DNS server address automatically**. Kliknite na **OK**

7



Podešavanje mrežne kartice na PC opremi

Ukucajte 192.168.1.1 u vaš browser u polje za web adrese



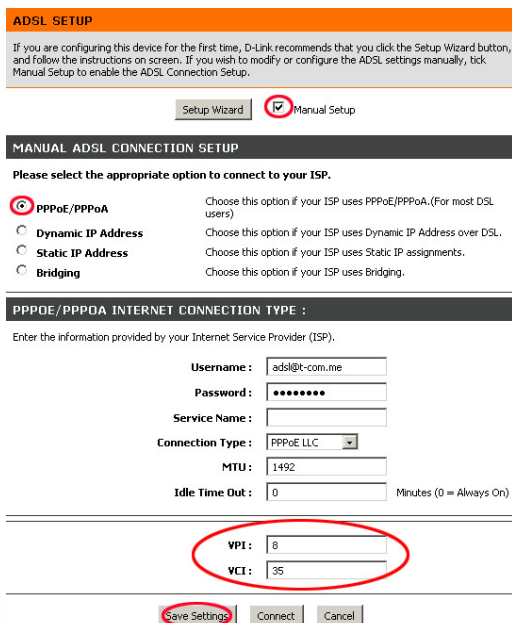
8

Pojaviće se prozor u koji treba da unesete User name: **admin** i lozinku: **admin**



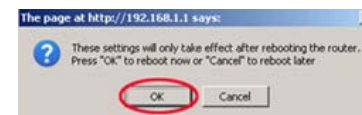
9

Kliknite na **Manual Setup** i **PPPoE-PPPoA** (ako već nisu selektovane i u polje **Username** ukucajte vašu e-mail adresu, u polje **Password** vašu lozinku. **VPI&VCI** vrijednosti podesite kao na slici. Kliknite na **Apply Settings**.



10

Restartovanjem rutera ce podešavanja biti aktivirana



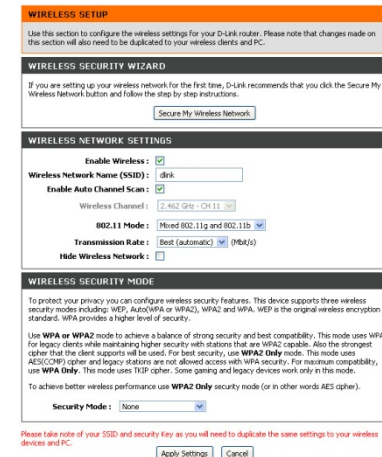
11

Izaberite **Wireless Setup**



12

Uključite wireless sa **Enable Wireless** i ukucaite vaš naziv wireless mreže (npr. Ime_wifi)



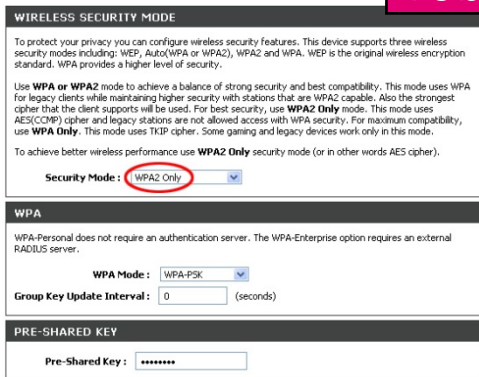
13a



Podešavanje mrežne kartice na PC opremi

Uključite **Security Mode** na **WAP2 Only**, unesite adekvatan **KEY** i potvrdite podesavanja sa **Apply Settings**

13b

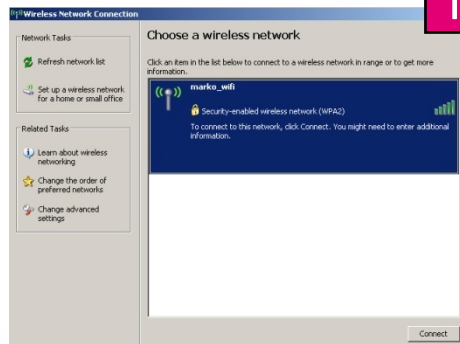


Please take note of your SSID and security Key as you will need to duplicate the same settings to your wireless devices and PC.



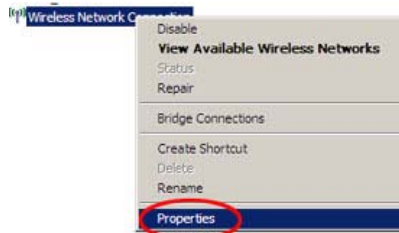
Biranjem opcije **Connect** se pokreće autorizacija na AP

16



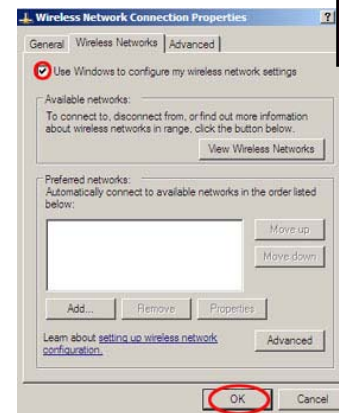
Desnim klikom na ikonu **Wireless Network Connection** otvara se pomoćni padajući meni iz kog birate **Properties**

14



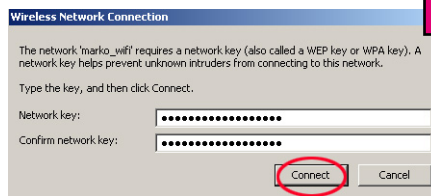
Izaberite opciju **Wireless Networks**. Čekirate opciju **Use Windows to configure my wireless network settings**

15



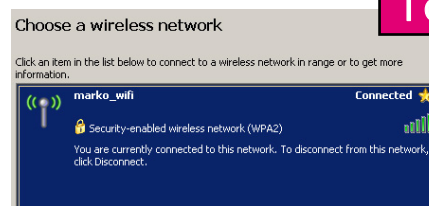
Unesite **Network Encryption key**. Kliknite na **Connect**.

17



Wireless network je konfigurisan i možete početi da ga koristite.

18



U slučaju neuspješne samoinstalacije pozovite Kontakt centar za podršku na broj 1566. Cijena poziva je 16 centi (sa PDV-om).

