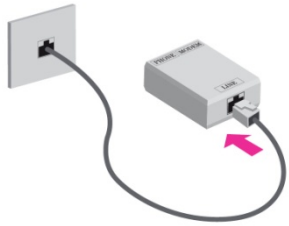


# Instalacija D-Link DSL 360R

Iskopčati dolaznu liniju iz telefonskog aparata. Dolaznu liniju priključiti na **LINE port** (splitter)

1



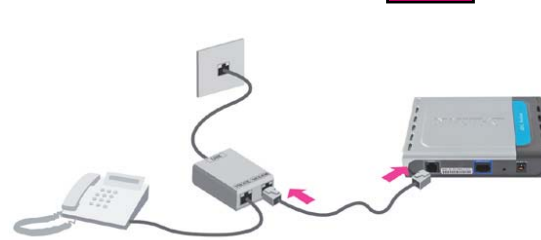
Telefonskim kablom, povezati telefonski aparat sa **PHONE portom** na splitteru

2



Telefonskim kablom povezati **Modem port** na splitteru sa modemom

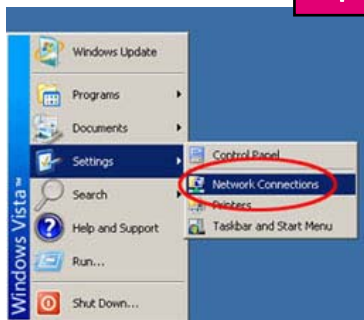
3



## Podešavanje mrežne kartice na PC opremi

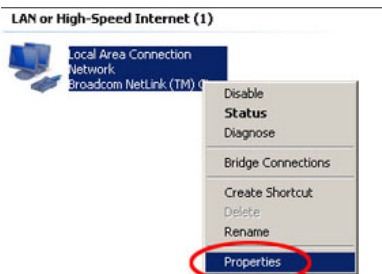
Otvorite prozor Network Connections Start dugme > Settings > Network Connections

4



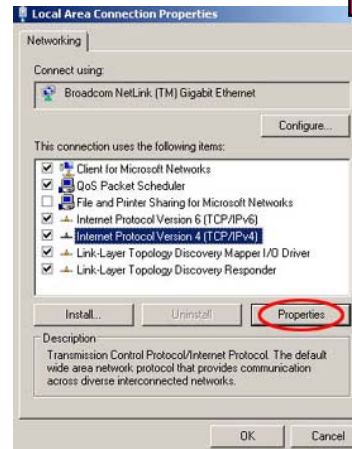
Desnim klikom izaberite opciju Properties na ikoni LAN or High-Speed Internet

5



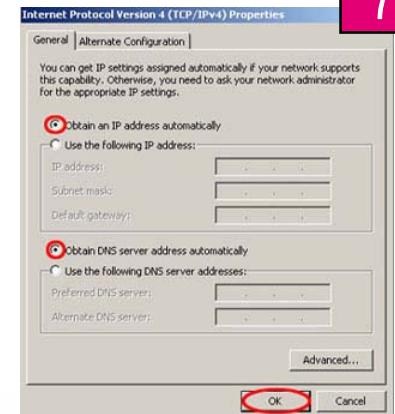
Izaberite opciju **Internet Protocol version 4 (TCP/IPv4)** i kliknite na Properties

6



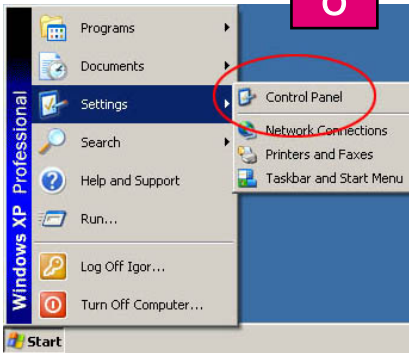
Ukoliko nije selektovano, uključite **Obtain an IP address automatically** i **Obtain DNS server address automatically**. Kliknite na **OK**

7



# Podešavanje mrežne kartice na PC opremi za Windows XP

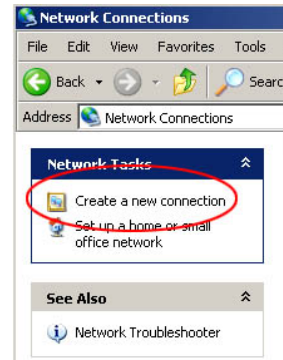
Otvorite prozor Control Panel (Start dugme > Settings > Control Panel)



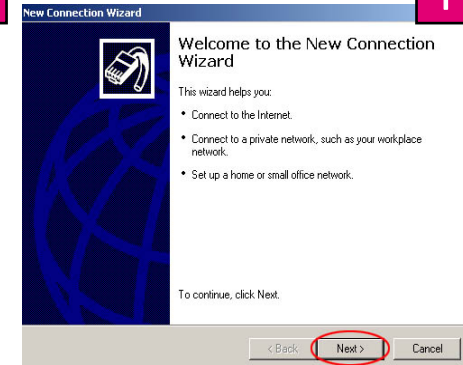
U prozoru Control Panel izaberite (dupli klik) ikonu Switch to Classic View i zatim kliknite na ikonu Network Connections



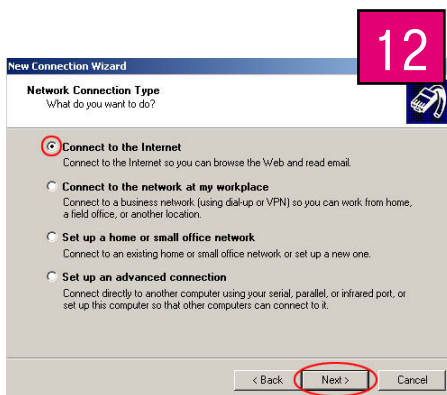
U prozoru kliknite na ikonu Create a new connection



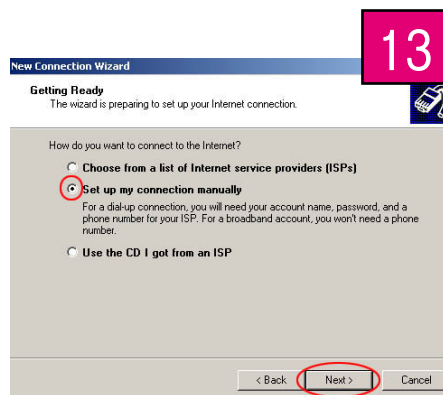
Otvora se prozor New Connection Wizard. Kliknite na Next



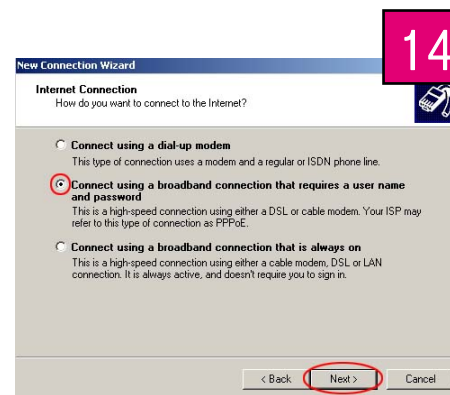
U prozoru odaberite Connect to the Internet



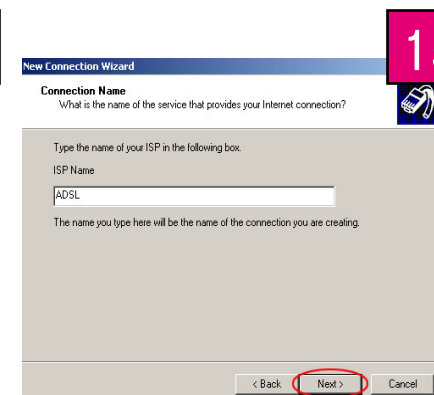
Odaberite Set up my connection manually



U prozoru odaberite Connect using a broadband connection that requires a user name and password

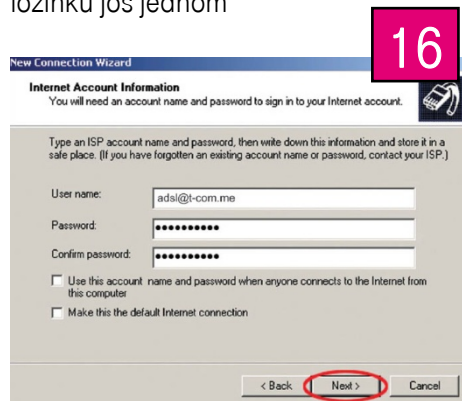


U polje ISP Name ukucajte ime provajdera (npr.ADSL)

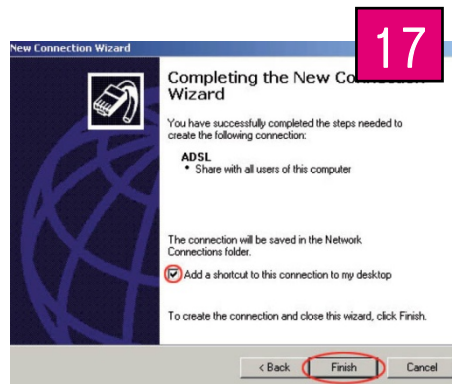


# Podešavanje mrežne kartice na PC opremi za Windows XP

U polje **User name** ukucajte e-mail adresu, u polje **Password** lozinku, a u polje **Confirm password** ukucajte lozinku još jednom



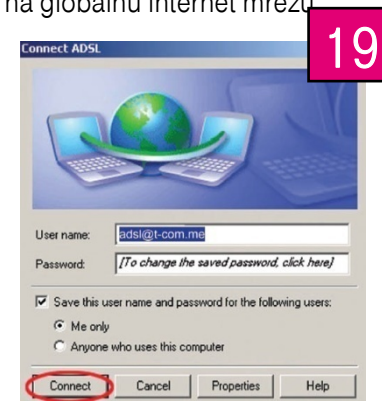
Uključite opciju **Add a shortcut to this connection to my desktop**



Da bi se konektovali na Internet uradite dvoklik na ADSL ikonu na Desktop-u

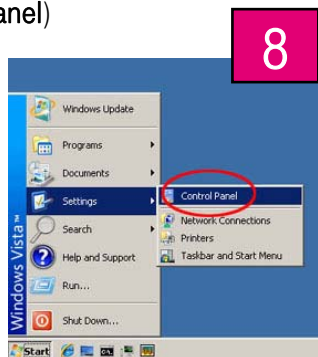


Klikom na dugme **Connect** u prozoru ADSL pokrenućete proces konektovanja računara na globalnu internet mrežu



# Podešavanje mrežne kartice na PC opremi za Windows Vista

Otvorite prozor Control Panela (Start dugme > Settings > Control Panel)



U prozoru Control Panel izaberite (dupli klik) ikonu Network and Internet



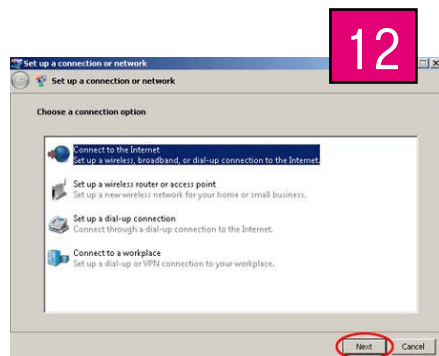
U prozoru kliknite na ikonu Network and Sharing Center



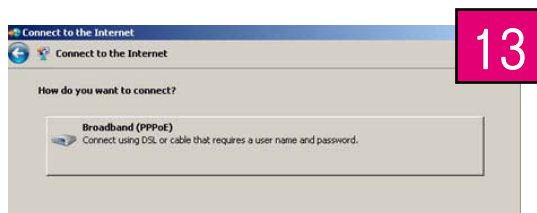
U prozoru birajte Set up a connection on network



Odaberite Connect to the Internet



U prozoru odaberite Broadband (PPPoE)



Ukoliko vec nijesu unijeti podaci, u polju User name ukucajte e-mail adresu, u polje Password lozinku



Kliknite na dugme Connect i povezaćete se na Internet

U slučaju neuspješne samoinstalacije pozovite Kontakt centar za podršku na broj 1566. Cijena poziva je 16 centi (sa PDV-om).

